



October 11, 2019

Office of Hopkins County Judge
The Honorable Robert Newsom
Post Office box 288
Sulphur Springs, Texas 75483

Farmers Electric Cooperative Member: Juan Perez-Vega
Service Order Number: 1910001436

Dear Judge Newsom,

Farmers Electric Cooperative, Inc. is requesting permission to re-route existing electrical power distribution facilities across CR 2310 which is located approximately 950' west of CR 3345 in Hopkins County, Texas.


Site location map and construction sketches are enclosed. The construction sketch details the proposed work. All road crossing will have a minimum vertical clearance of 22 feet.

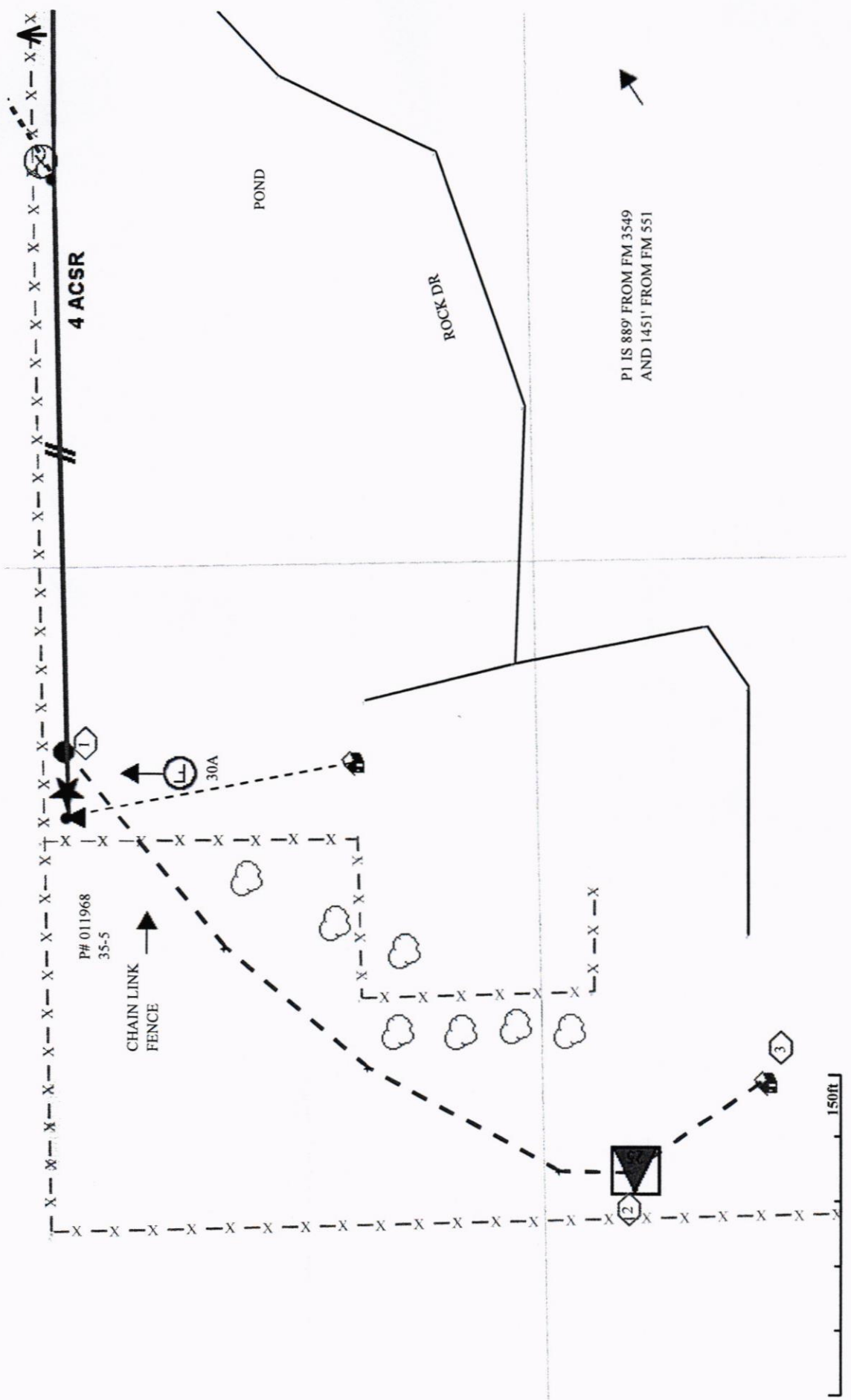
If you have any questions, please feel free to contact met at any time at 903-441-1368.

Sincerely,
Matt Walker
Engineering Assistant
twilliams@farmerselectric.coop

Enclosures

Submitted by:
Brandon Darrow
Field Engineering Coordinator
Office 903-453-0740

 10-24-19



4 ACSR

POND

ROCK DR.

P1 IS 889' FROM FM 3549
AND 1451' FROM FM 551

P# 011968
35-5

CHAIN LINK
FENCE

30A

150ft.



Site Location Map

911 Address: 5690 CR 2310

Sulphur Springs, TX 75482

Service Order No. 1910001436 – Juan Perez-Vega